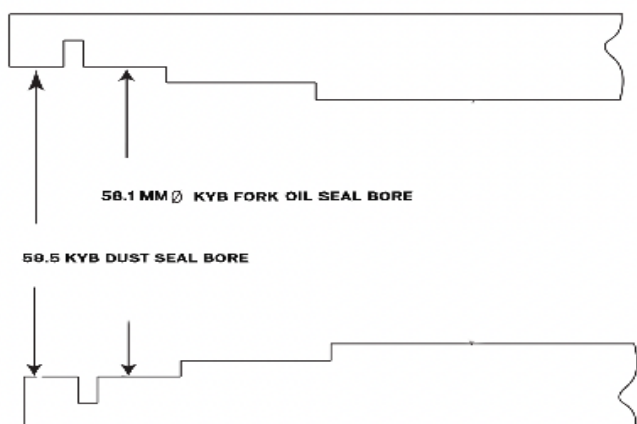
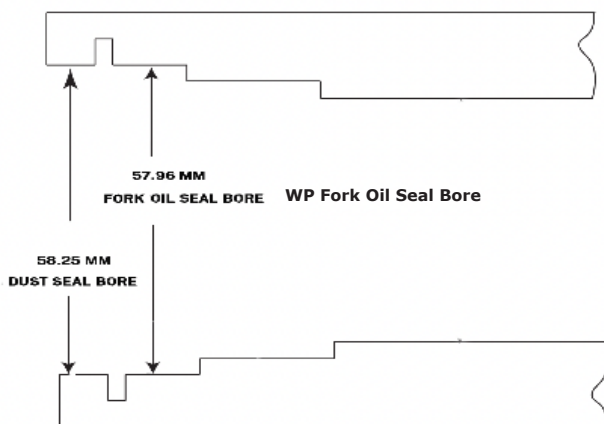


# 48MM Liquid A Kit Fork Seal Installation Guide

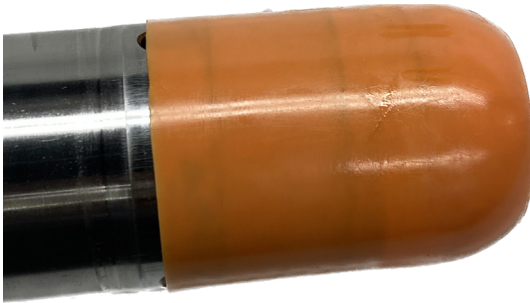
The **48mm** seals are designed to fit a wide range of motorcycle fork brands i.e. **WP, KYB, Showa, Ohlins** and **Sachs** forks. The seal bore diameters vary slightly from brand to brand. The largest seal gland bore is found on the **KYB** fork and the smallest is the **WP** fork.



The drawings show the seal bore size difference between **WP** and **KYB**. In both cases you will encounter a press fit and on the **WP** fork this press fit will be a little firmer. With this in mind, we have engineered the **48mm Liquid A Kit** seals to cover the wide range of seal bore tolerances on the **48mm** forks.



**#1 lightly grease ID and OD of seals before installation.**



**#2 Use a seal bullet tool to install seals onto the fork tube.**



**#3 Remove seal bullet tool and install spacer washer and the two slide bushings onto fork tube.**



**#4 install inner fork tube into outer fork tube and slide bushings and spacer down into upper tube housing. It's a good practice to use the seal sitting driver to to set the bushing and spacer washer into tube housing.**



**#5 Push the oil seal down as far as you can into seal housing with seal drive tool to square seal up into housing bore.**



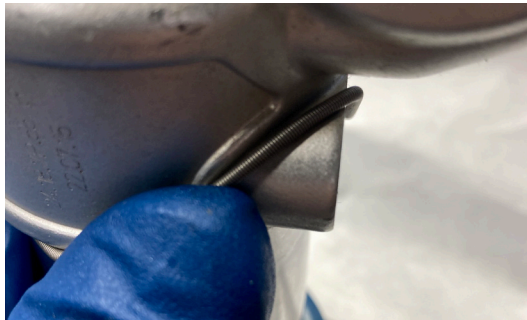
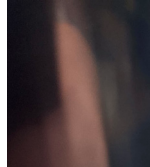
**#6 Use seal driver and strike the seal a few times to press it to the bottom of the seal housing. Make sure then seal is below the wire ring groove.**



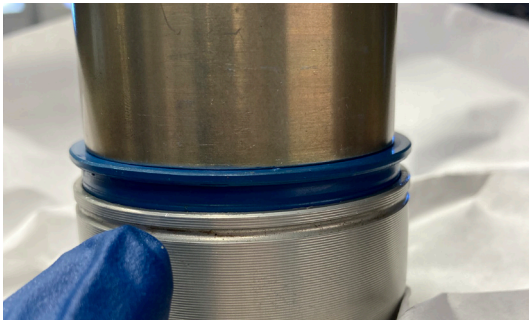
**#7 Install wire ring into wire ring groove and double check to make sure it seated properly into groove. You can use a small flat screw driver or pick to do so.... this is very important !!**

# Installing Dust Wipers

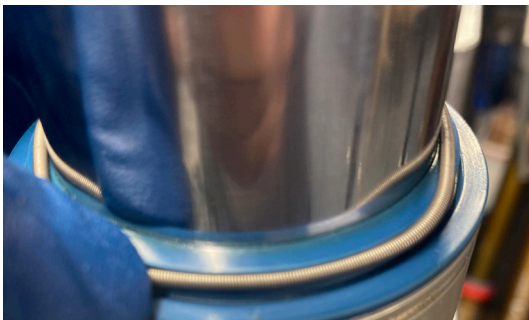
## Trick of the trade !



**#9 Remove the garter spring from dust wiper and slide it up fork tube and place it on the fork guard bolt post. This will hold the garter spring up and out of the way during dust wiper installation.**



**#10 Very important.....make sure the dust wiper is level (squared up) with seal bore. Using the seal driver and with a twisting motion and push dustwiper into place. After dust wiper is seated you can also slide seal driver down a couple of times to make sure it's in place.**



**#11 Pull the garter spring down and install the garter spring back onto dust wiper.**